

# MONO-SHELLS

POLYPROPYLENE

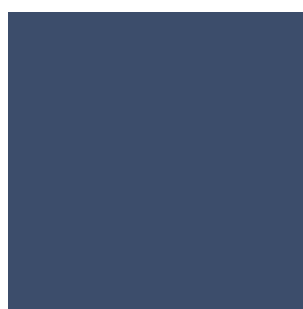
## PP1 COLOURS



B00



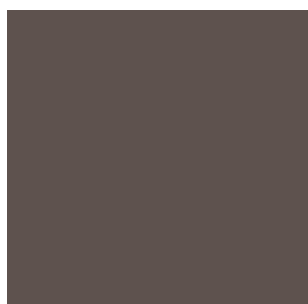
B40



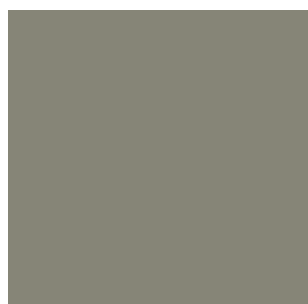
B36



B44



M56



V74



V16



G42



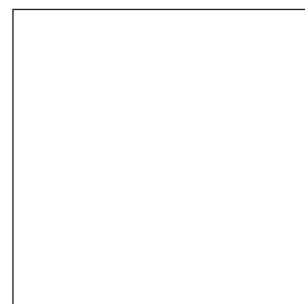
M38



Y62



P70



W01

## ECOPLAS

100% recycled polypropylene



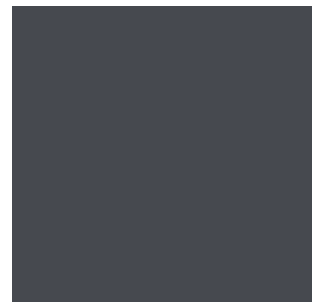
V92



M44



M82



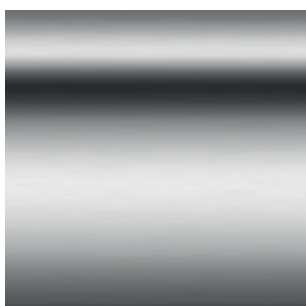
G66

MONO-SHELLS - POLYPROPYLENE

# BASES

STEEL BASES & ARMS

CHROME



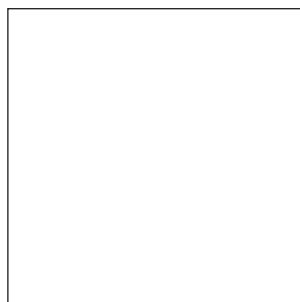
M1 COLOURS



B00



Aluminum



W01

## M2 COLOURS



M56



B40



B36



G49



M38



V74



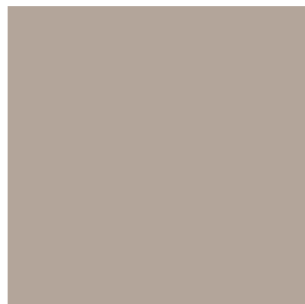
B44



G42



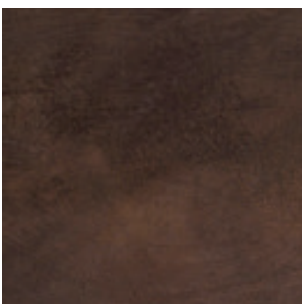
Y62



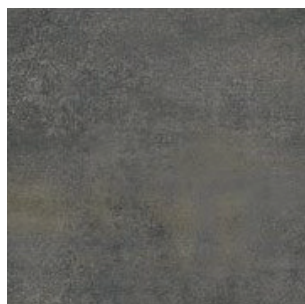
M82



P70



Rust Brown



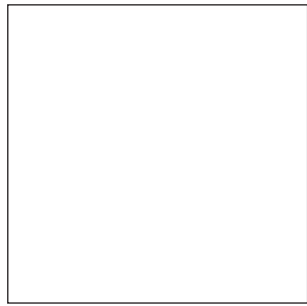
Rust Grey

# BASES

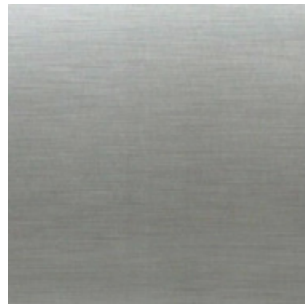
## ALUMINUM BASES



B00



W01



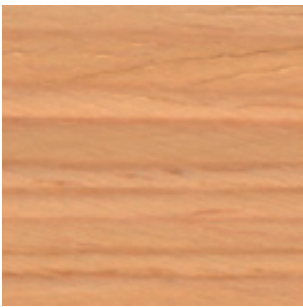
POLISHED

# BASES

## WOODEN BASES

### SOLID WOOD

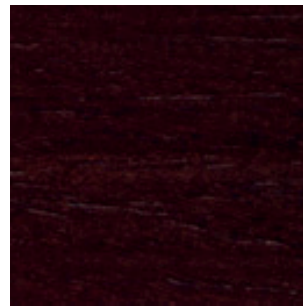
#### OAK



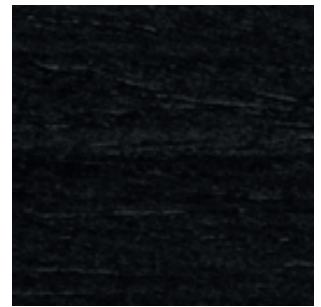
Natural Stain



Walnut Stain



Wenge Stain



Black Stain

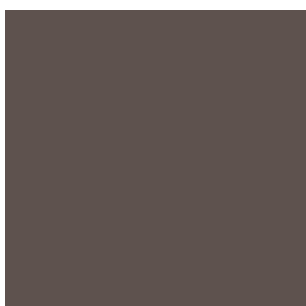
# BASES

POLYPROPYLENE BASES

PP1 COLOURS



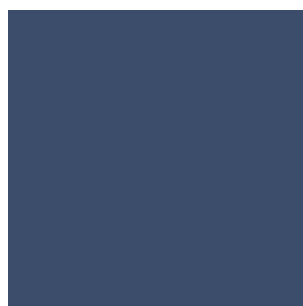
B00



M56



B40



B36



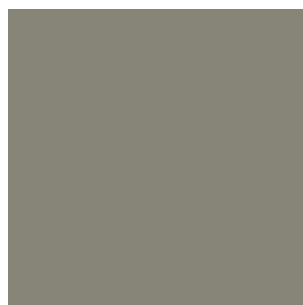
B44



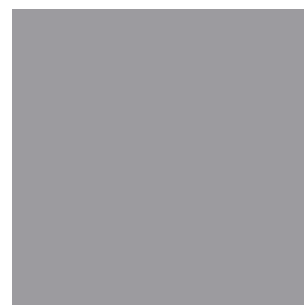
M38



V16



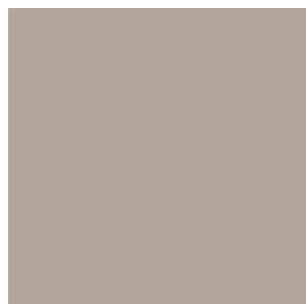
V74



G42



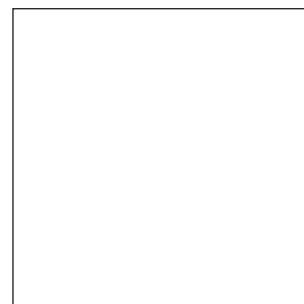
Y62



M82



P70



W01

# G1 - ASIS <sup>NEW</sup>

## TECHNICAL DATA

**Composition:**

100% polyester.

**Light fastness:**

5 - 6, ISO 105 B02, Method 2.

**Abrasion:**

100.000 Martindale EN ISO 12947-2.

**Resistance to pilling:**

4 - 5, ISO 12945-2:002.

**Rubbing fastness in humid state:**

4, ISO 105-X12.

**Rubbing solvents:**

4, ISO 105-X12.

**Tear strength:**

Warp 140N.

Weft 110N, EN ISO 13937-3.

**Flammability:**

EN 1021 - 1/2.

BS 5852 0.

BS 7176 Low Hazard.

CAL TB 117 Section 1.

NFPA 260 Class 1.

Regulation n° 118 UNECE Annexed 6.

IMO MSC.307 (88) Annexed I Part 8.

**Width:** 140cm

**Weight:** 335gr/m<sup>2</sup>



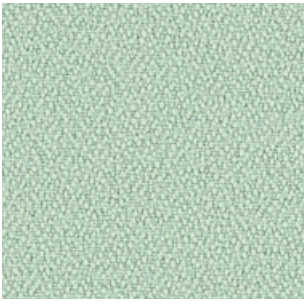
\*\*\*Batch to batch variations may occur within commercial tolerances.

**Note:**

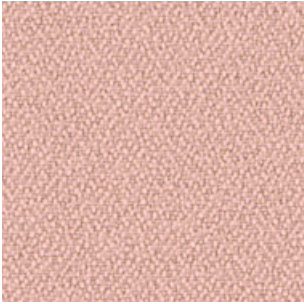
- The real colours and tones of the fabrics may differ from the digital image due to the scan process and the colour calibration of the different screens. Always request real fabric samples before ordering.

- Consult our Fabric and Leather Matrix to know about the availability of this material by product line.

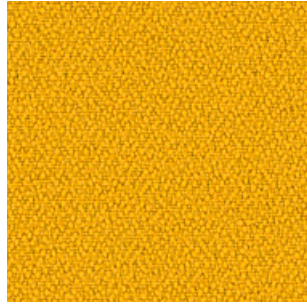




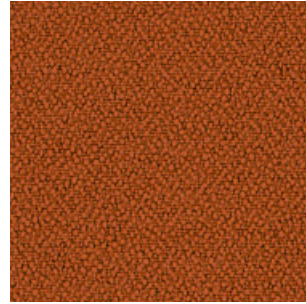
198



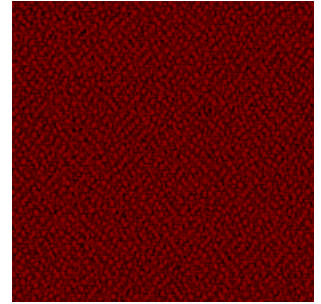
315



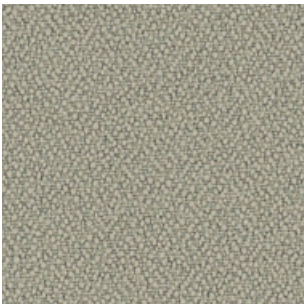
88



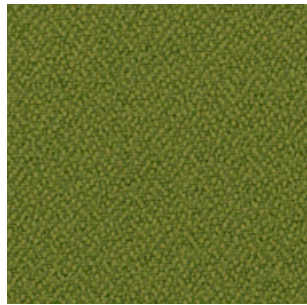
122



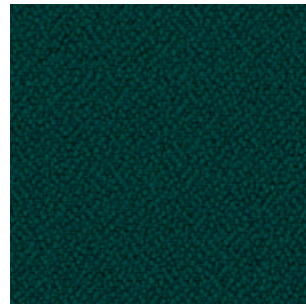
4011



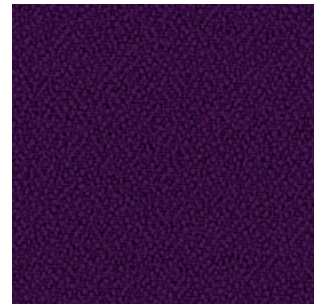
422



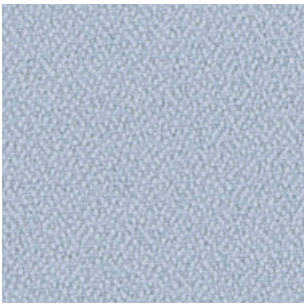
77



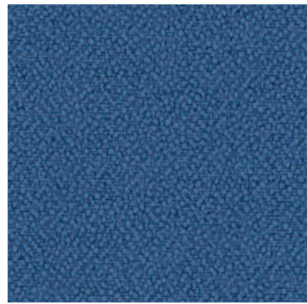
47



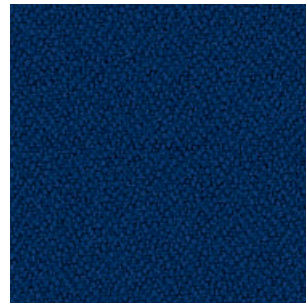
292



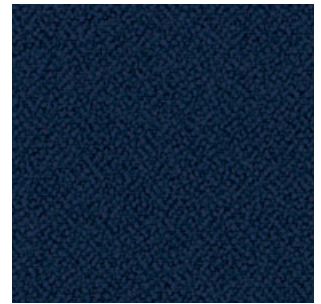
86



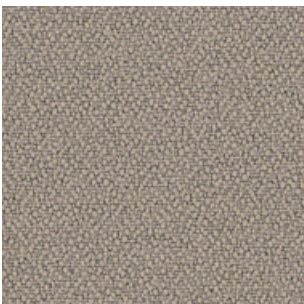
4



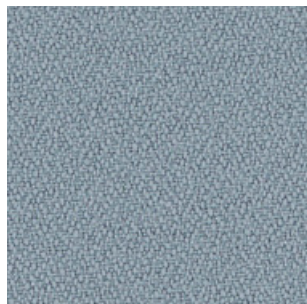
5



26



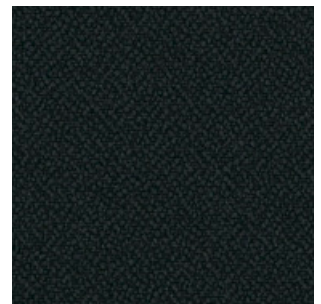
132



170



108



9

# G2 - ARS<sup>NEW</sup>

## TECHNICAL DATA

**Composition:**

100% polyester.

**Light fastness:**

5, ISO 105 B02, Method 2.

**Abrasion:**

90.000 Martindale EN ISO 12947-2.

**Resistance to pilling:**

4 - 5, ISO 12945-2:002.

**Rubbing fastness in humid state:**

5, ISO 105-X12:2001.

**Rubbing solvents:**

4 - 5, ISO 105-X12:2001.

**Seam strength:**

Warp 3,7mm.

Weft 0,2mm, EN ISO 13936-2.

**Seam strength:**

Warp 75,6N.

Weft 65,1N, EN ISO 13937-3.

**Flammability:**

EN 1021 - 1 (cigarette).

**Environment:**

OEKO-TEX® Standard 100.

**Width:** 140cm

**Weight:** 250gr/m<sup>2</sup>



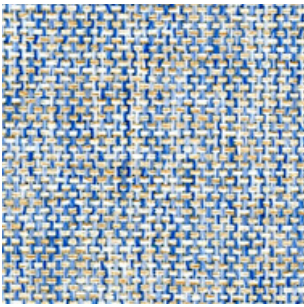
\*\*\*Batch to batch variations may occur within commercial tolerances.

**Note:**

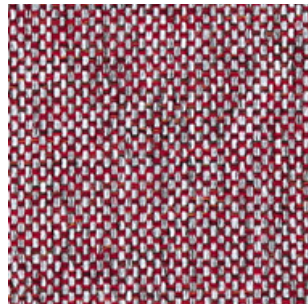
- The real colours and tones of the fabrics may differ from the digital image due to the scan process and the colour calibration of the different screens. Always request real fabric samples before ordering.
- Consult our Fabric and Leather Matrix to know about the availability of this material by product line.



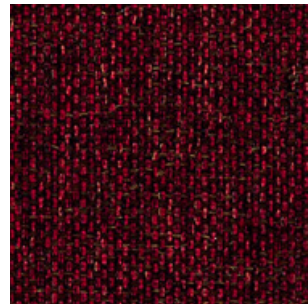
90



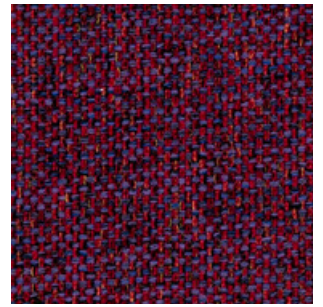
74



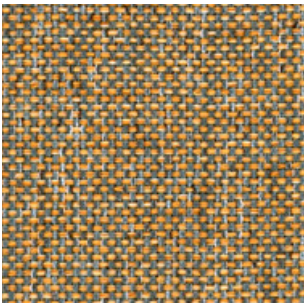
27



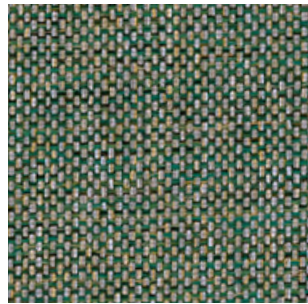
59



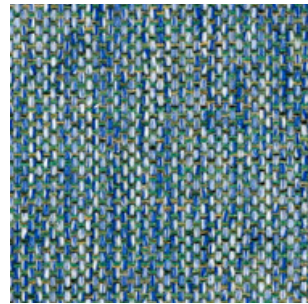
68



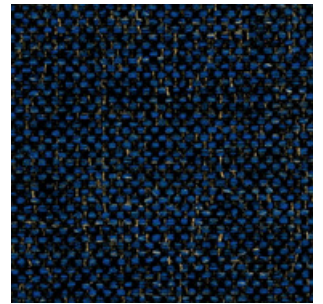
45



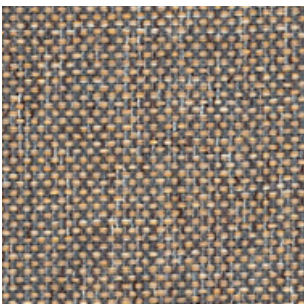
35



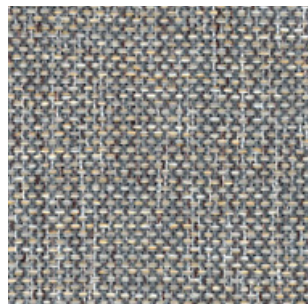
75



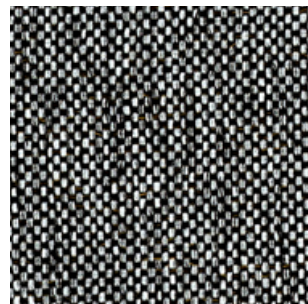
79



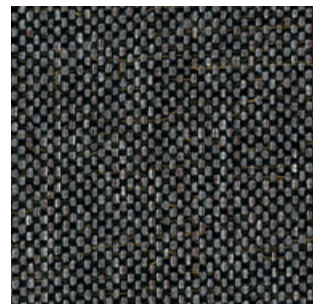
87



88



98



99

# G2 - PIXEL

## TECHNICAL DATA

**Composition:**

100% polyolefin.

**Light fastness:**

5 - 6, UNE-EN ISO 105-B02:2001 +A1:2002. Method 2.

**Abrasion:**

40.000 Martindale EN ISO 14465:2004.

**Resistance to pilling:**

4 - 5, UNE-EN 14465:2004.

**Dye fastness to rubbing:**

Wet 4 - 5.

Dry 4 - 5, UNE-EN ISO 105-X12:2003.

**Tear Resistance:**

Warp 120N.

Weft 130N UNE-EN ISO 13937-3:2001.

**Flammability:**

EN 1021-1:2015 (cigarette)

BS 5852:2006 (cigarette)

DIN 66084:2003-7 classification P- c

CAL TB 117:2013 Section 1: COVER FABRIC TEST NFPA 260:2013 CLASS 1.

**Width:** 140cm

**Weight:** 255gr/m<sup>2</sup>

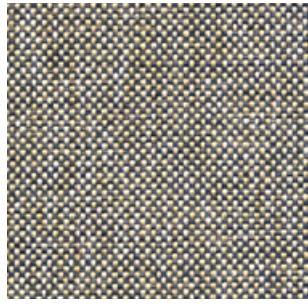


\*\*\*Batch to batch variations may occur within commercial tolerances.



**Note:**

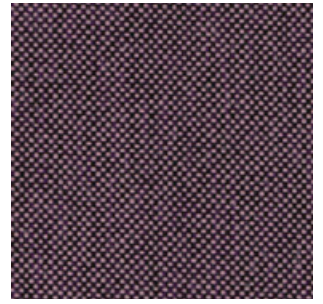
- The real colours and tones of the fabrics may differ from the digital image due to the scan process and the colour calibration of the different screens. Always request real fabric samples before ordering.
- Consult our Fabric and Leather Matrix to know about the availability of this material by product line.



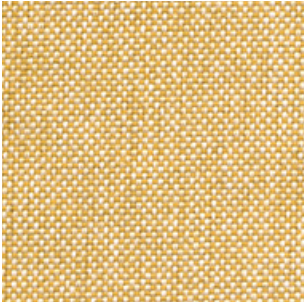
12



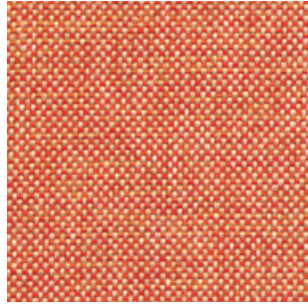
3



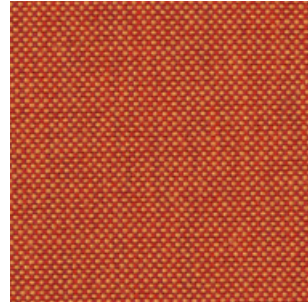
90



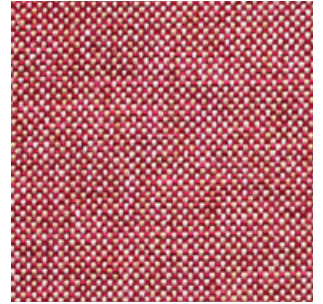
50



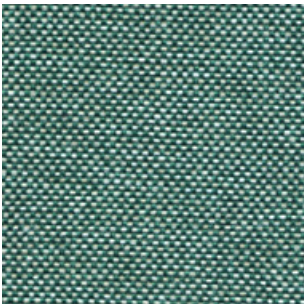
53



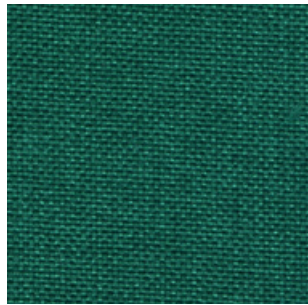
62



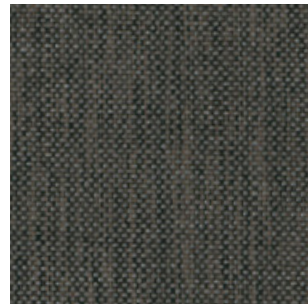
54



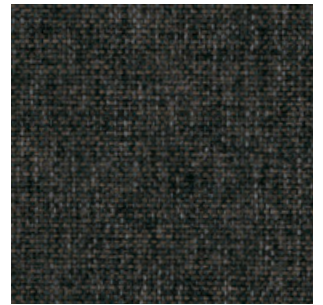
101



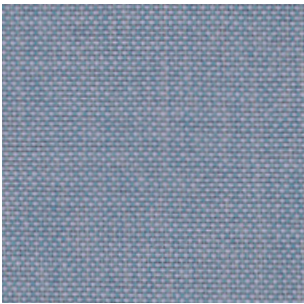
102



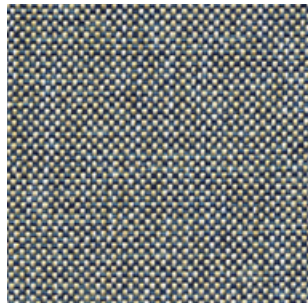
41



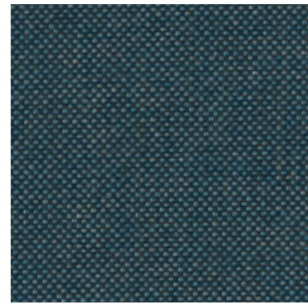
43



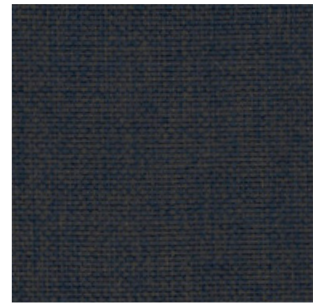
84



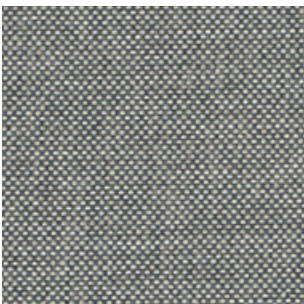
71



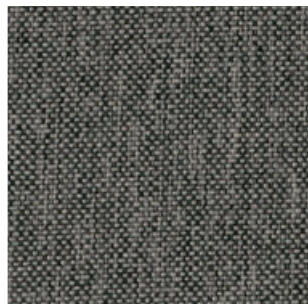
78



247



19



21



29



801

# G2 - CORA

## TECHNICAL DATA

**Composition:**

100% polyester.

**Light fastness:**

5 EN ISO 105-B02, Method 2.

**Abrasion:**

83.000 Martindale EN ISO 12947-1, 2.

**Resistance to pilling:**

4, EN ISO 12945-2:2002.

**Rubbing fastness in humid state:**

5, ISO 105-X12:2001.

**Rubbing solvents:**

5, ISO 105-X12:2001.

**Seam strength:**

Warp 2,5mm.

Weft 3,7mm, ISO 13936-2.

**Tear strength:**

Warp exceed 154,2N.

Weft exceed 112,3N, EN ISO 13937-3.

**Flammability:**

EN 1021 - 1 (cigarette).

**Width:** 140cm

**Weight:** 330gr/m<sup>2</sup>



\*\*\*Batch to batch variations may occur within commercial tolerances.



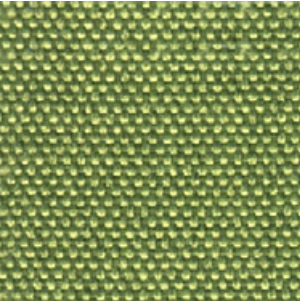
**Note:**

- The real colours and tones of the fabrics may differ from the digital image due to the scan process and the colour calibration of the different screens. Always request real fabric samples before ordering.

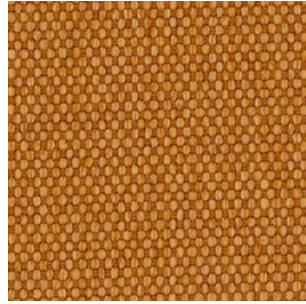
- Consult our Fabric and Leather Matrix to know about the availability of this material by product line.



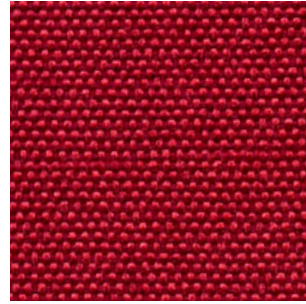
21



32



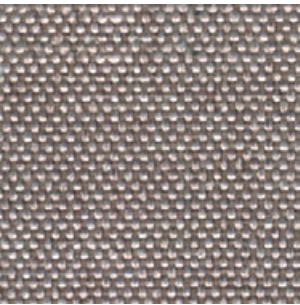
48



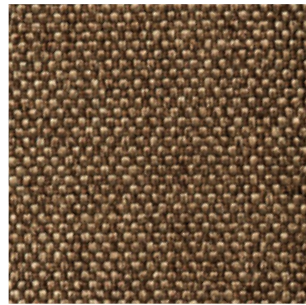
60



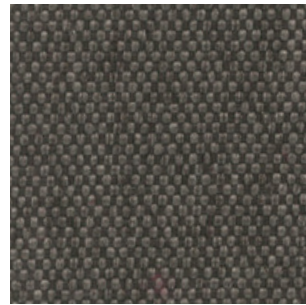
65



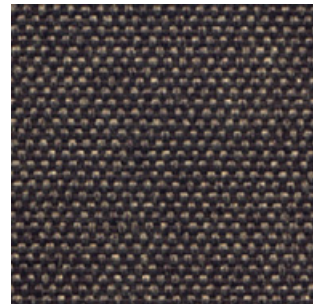
12



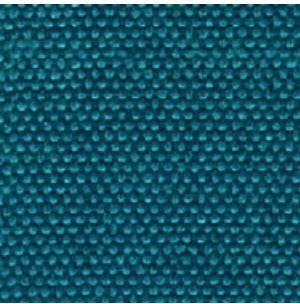
40



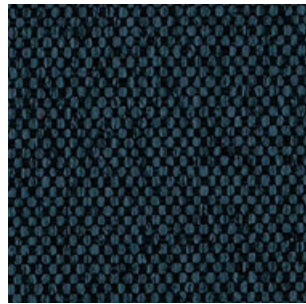
115



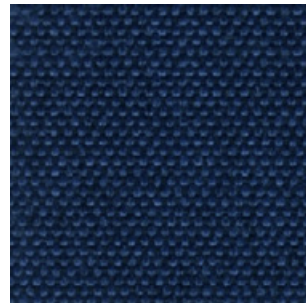
27



17



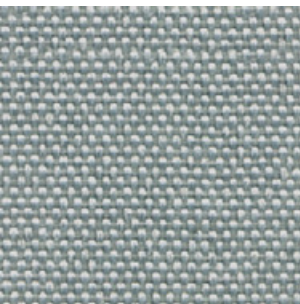
37



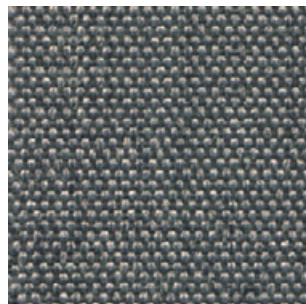
18



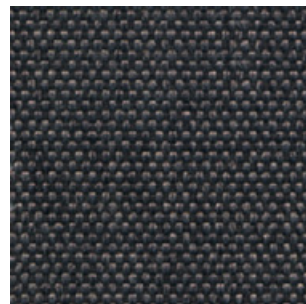
38



3



14



20



2

# G2 - HILTON

## TECHNICAL DATA

**Composition:**

100% polyester.

**Light fastness:**

4, ISO 105 B02:1994.

**Abrasion:**

>25.000 Martindale ISO 12947-2:1998.

**Resistance to pilling:**

4 - 5, ISO 12945-2.

**Tear strength:**

Warp 63N.

Weft 63N, ISO13937-3:2000.

**Dye fastness to rubbing:**

Wet 4 - 5. Dry 4 - 5, ISO 105X12:2001.

**Width:** 140cm

**Weight:** 380gr/m<sup>2</sup>



\*\*\*Batch to batch variations may occur within commercial tolerances.



**Note:**

- The real colours and tones of the fabrics may differ from the digital image due to the scan process and the colour calibration of the different screens. Always request real fabric samples before ordering.
- Consult our Fabric and Leather Matrix to know about the availability of this material by product line.





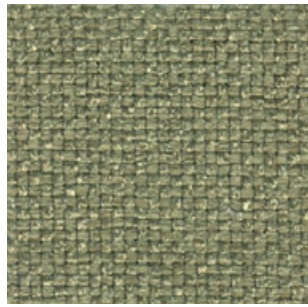
6



4



2



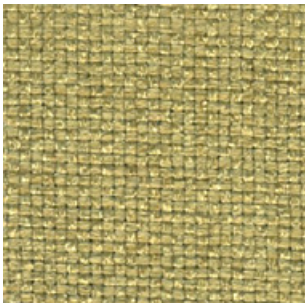
18



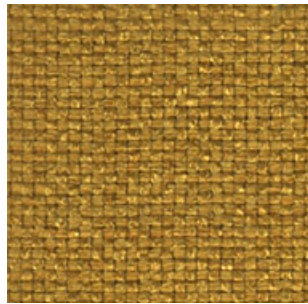
8



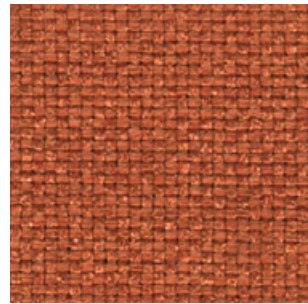
9



17



10



11



12



16



13



14



1

# G2 - ADDO

## TECHNICAL DATA

**Composition:**

80% polyester, 20% cotton.

**Light fastness:**

5, ISO 105 B02, Method 2.

**Abrasion:**

40.000 Martindale ISO 12947-1, 2.

**Resistance to pilling:**

4, ISO 12945-2:002.

**Rubbing fastness in humid state:**

3, ISO 105-X12:2001.

**Rubbing solvents:**

4 - 5, ISO 105-X12:2001.

**Seam strength:**

Warp 3mm.

Weft 2mm, ISO 13936-2.

**Tear strength:**

Warp exceed 175,1N.

Weft exceed 120,7N, EN ISO 13937-3.

**Flammability:**

EN 1021 - 1 (cigarette).

**Width:** 140cm

**Weight:** 365gr/m<sup>2</sup>



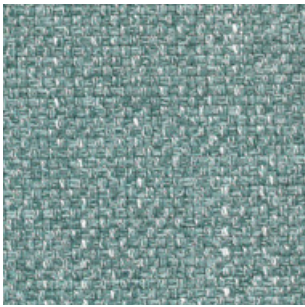
\*\*\*Batch to batch variations may occur within commercial tolerances.



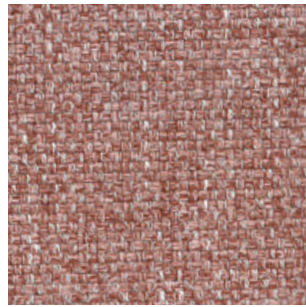
**Note:**

- The real colours and tones of the fabrics may differ from the digital image due to the scan process and the colour calibration of the different screens. Always request real fabric samples before ordering.

- Consult our Fabric and Leather Matrix to know about the availability of this material by product line.



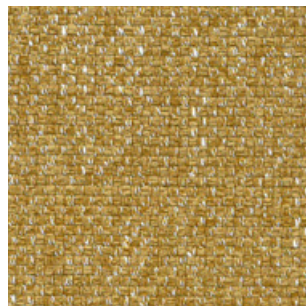
12



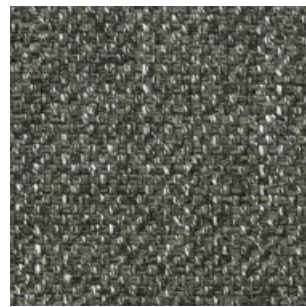
10



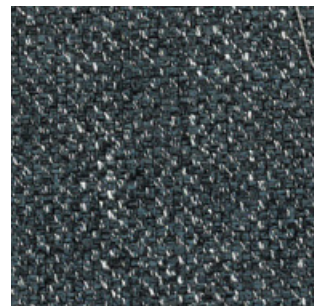
14



15



16



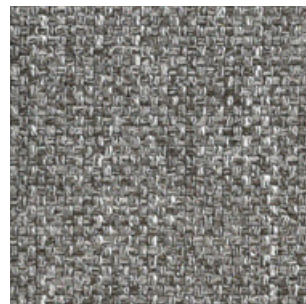
11



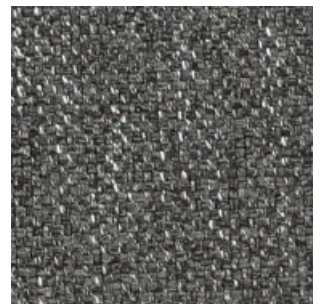
5



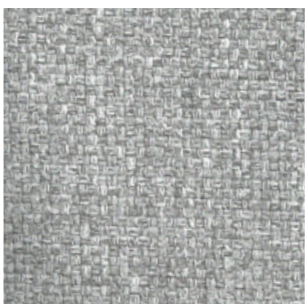
6



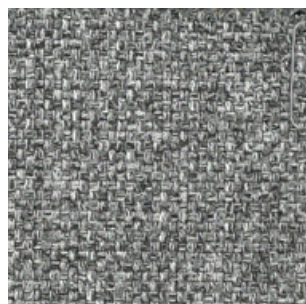
7



8



4



3



30



1

# G3 - CALMA <sup>NEW</sup>

## TECHNICAL DATA

### Composition:

Topcoat: 70% Vinyl, 30% P.U.  
Backing: 100% Microfiber Polyester.

### Light fastness:

>4.

### Abrasion:

>100.000 Martindale.

### Breaking strength:

Warp >180N.  
Weft >330N, ISO 1421.

### Tear strength:

Warp >25N/cm.  
Weft >28N/cm, ISO 4674-1.

### Flex Bally:

>100.000 cycles.

**Width:** 140cm.

**Weight:** 853gr/m<sup>2</sup>.



\*\*\*Batch to batch variations may occur within commercial tolerances.

### Note:

- The real colours and tones of the fabrics may differ from the digital image due to the scan process and the colour calibration of the different screens. Always request real fabric samples before ordering.
- Consult our Fabric and Leather Matrix to know about the availability of this material by product line.



407



415



425



477



412



411



421



401



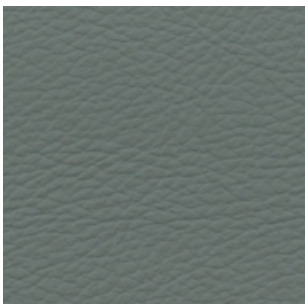
418



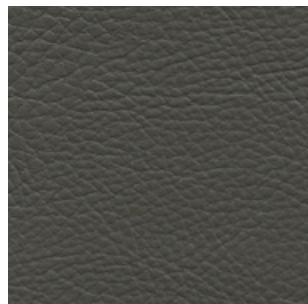
419



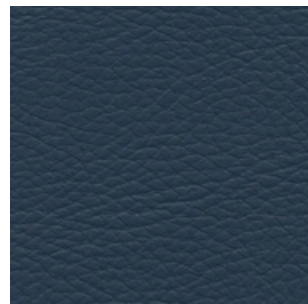
423



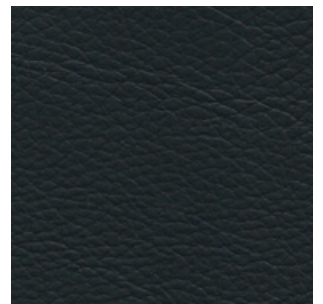
470



475



469



490

# G3 - RIVET <sup>NEW</sup>

By Camira

## TECHNICAL DATA

### Composition:

100% REPREVE® recycled polyester.

### Light fastness:

6, EN ISO 105-B02: 2014, Method 3.

### Abrasion:

≥80.000 Martindale EN ISO 12947-2: 2016

### Fastness to rubbing:

Wet 4.

Dry 4, ISO 105 X12.

### Flammability:

EN 1021 - 1 (cigarette).

EN 1021 - 2 (match).

BS 7176 Low Hazard.

UNI 9175 Class 1 IM.

### Environment:

Complies with EU Ecolabel.

Certificate Indoor Advantage™ Gold.

**Width:** 140cm

**Weight:** 280gr/m<sup>2</sup>



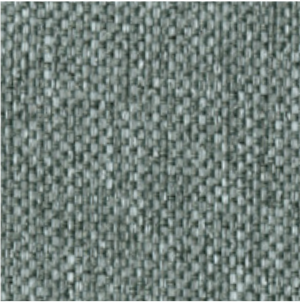
\*\*\*Batch to batch variations may occur within commercial tolerances.



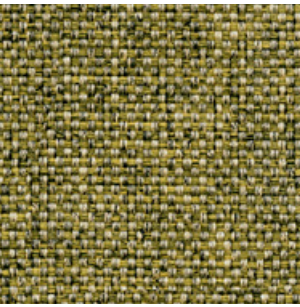
**100%**  
recycled material  
Post Consumer  
Recycled  
Polyester

### Note:

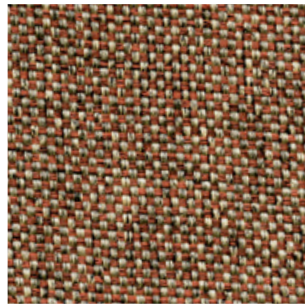
- The real colours and tones of the fabrics may differ from the digital image due to the scan process and the colour calibration of the different screens. Always request real fabric samples before ordering.
- Consult our Fabric and Leather Matrix to know about the availability of this material by product line.



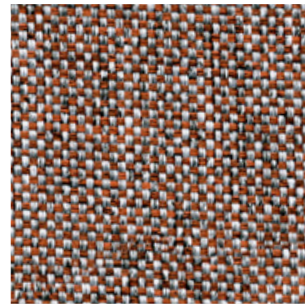
26



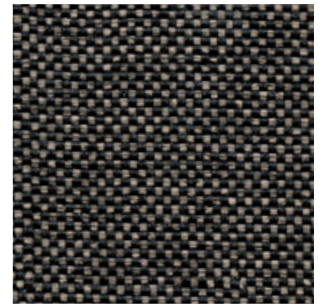
10



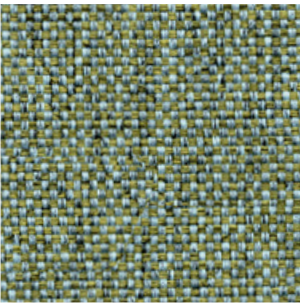
14



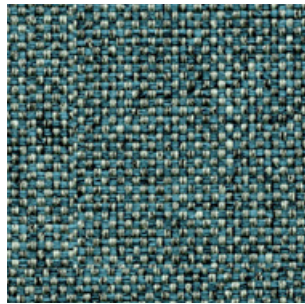
09



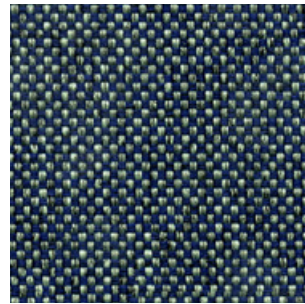
36



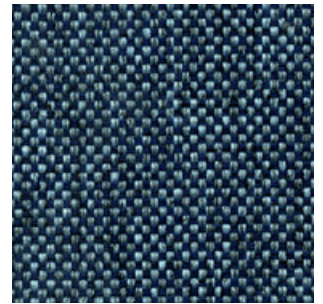
11



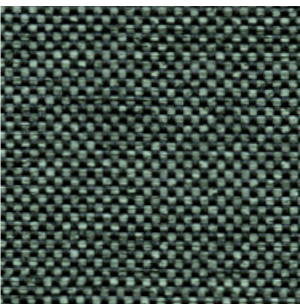
21



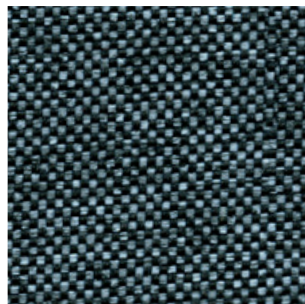
27



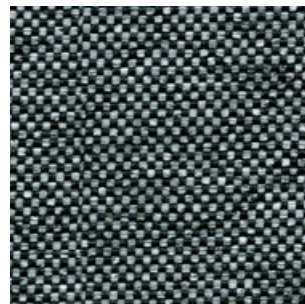
24



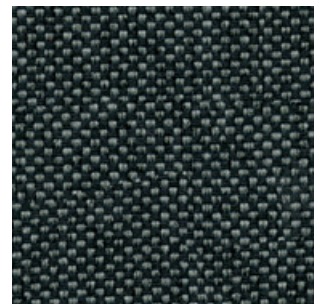
34



48



50



37

# G3 - ERA <sup>NEW</sup>

By Camira

## TECHNICAL DATA

**Composition:**

100% polyester.

**Light fastness:**

5, EN ISO 105 B02.

**Abrasion:**

≥100.000 Martindale EN ISO 12947.

**Fastness to rubbing:**

Wet 4.

Dry 4, ISO 105 X12.

**Flammability:**

EN 1021 - 1 (cigarette).

EN 1021 - 2 (match).

BS 7176 Low Hazard.

EN 13501-1 Adhered Class B, s1, d0.

EN 13501-1 Un-adhered Class C, s1, d0.

**Environment:**

OEKO-TEX® Standard 100.

Certificate Indoor Advantage™ Gold.

**Width:** 140cm

**Weight:** 320gr/m<sup>2</sup>



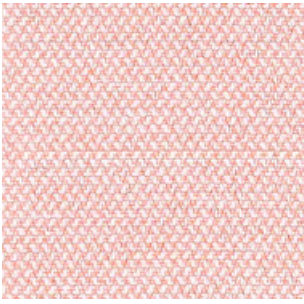
\*\*\*Batch to batch variations may occur within commercial tolerances.



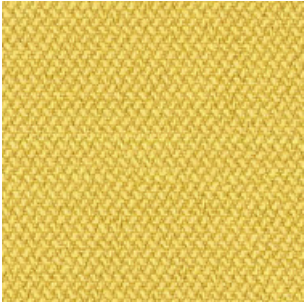
**Note:**

- The real colours and tones of the fabrics may differ from the digital image due to the scan process and the colour calibration of the different screens. Always request real fabric samples before ordering.
- Consult our Fabric and Leather Matrix to know about the availability of this material by product line.

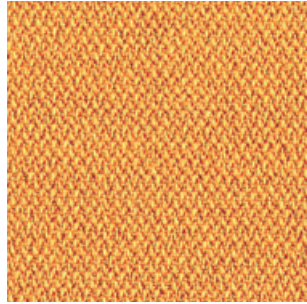




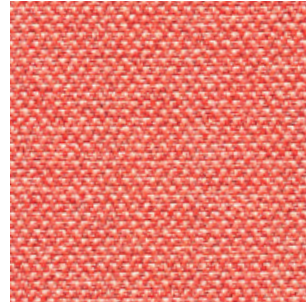
19



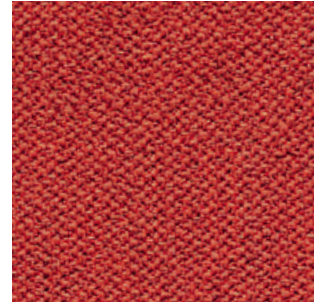
3



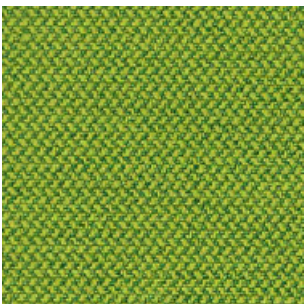
27



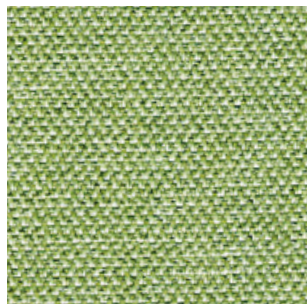
26



29



16



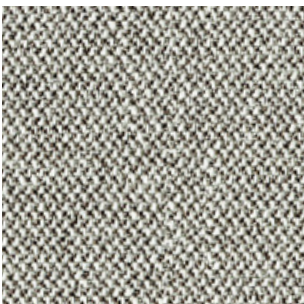
34



1



2



45



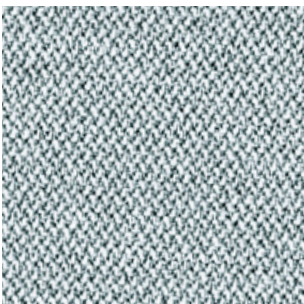
11



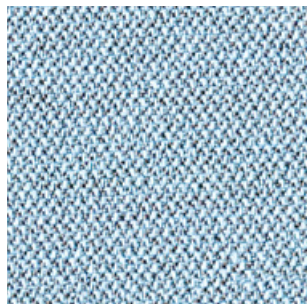
13



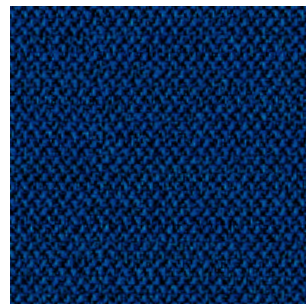
21



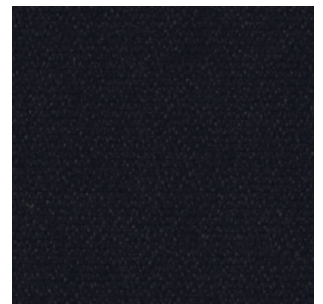
46



39



40

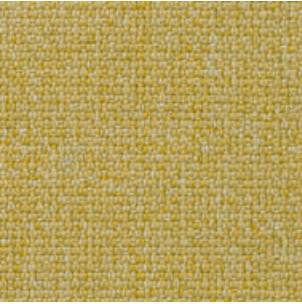


14





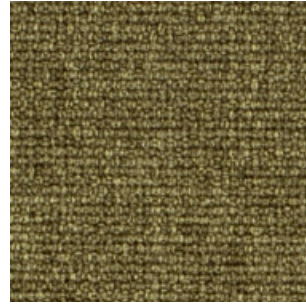
65011



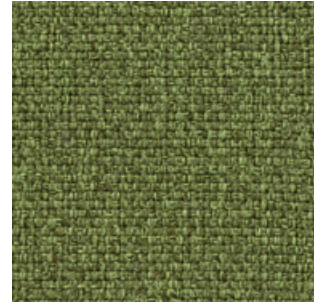
62054



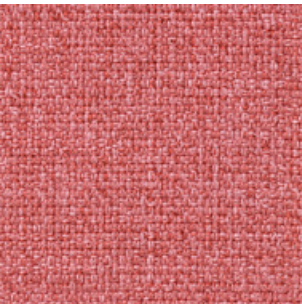
61003



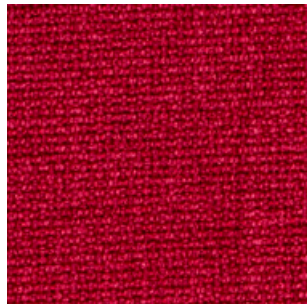
67002



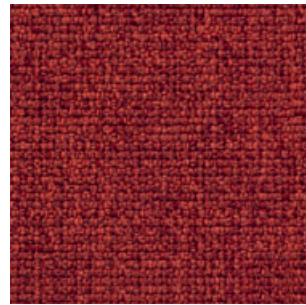
68005



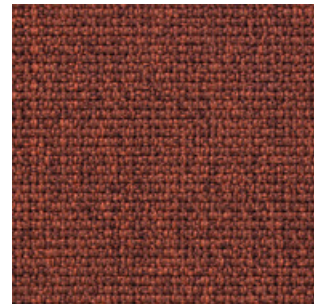
63064



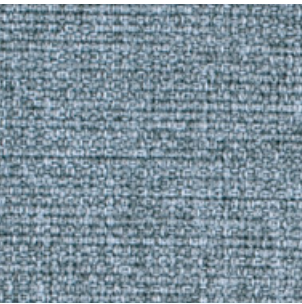
64019



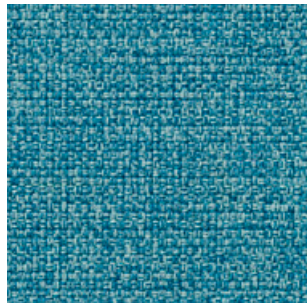
63016



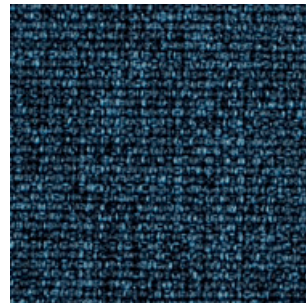
63063



66008



67006



66010



61004



60003



60167



60004



60999

# G4 - MAIN LINE FLAX<sup>NEW</sup>

By Camira

## TECHNICAL DATA

### Composition:

75% virgin wool, 25% flax.

### Light fastness:

5, ISO 105 B02.

### Abrasion:

≥50.000 Martindale EN ISO 12947-2:1999.

### Resistance to pilling:

4 - 5, ISO 12945-2.

### Fastness to rubbing:

Wet 3.

Dry 4, ISO 105 X12.

### Flammability:

EN 1021 - 1 (cigarette).

EN 1021 - 2 (match).

BS 7176 Low Hazard.

BS 5852 Ignition source 5.

BS 7176 Medium Hazard.

NF D 60-013.

ÖNORM B 3825 & A 3800-1.

UNI 9175 Class 1 IM.

BS 5867-2: Type B Curtains & Drapes.

IMO FTP Code (Part 8).

### Environment:

Complies with EU Ecolabel.

Certificate Indoor Advantage™ Gold.

**Width:** 140cm

**Weight:** 437gr/m<sup>2</sup>

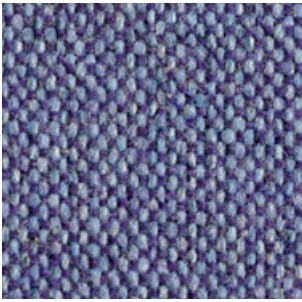


\*\*\*Batch to batch variations may occur within commercial tolerances.

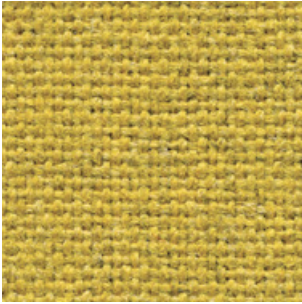


### Note:

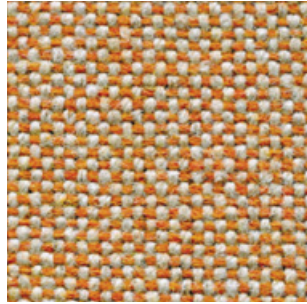
- The real colours and tones of the fabrics may differ from the digital image due to the scan process and the colour calibration of the different screens. Always request real fabric samples before ordering.
- Consult our Fabric and Leather Matrix to know about the availability of this material by product line.



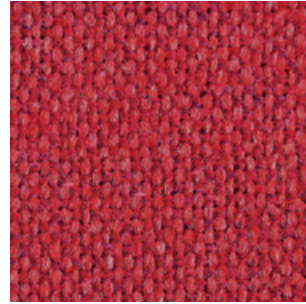
27



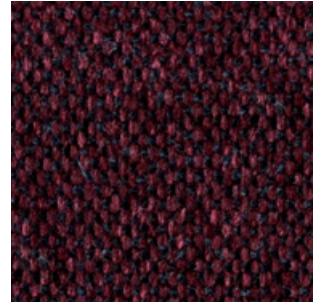
17



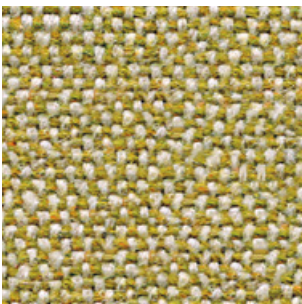
8



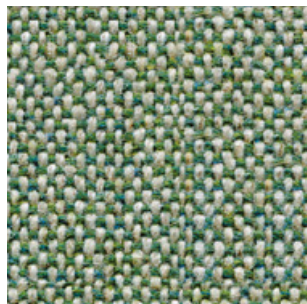
1



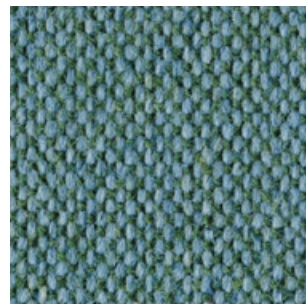
40



7



9



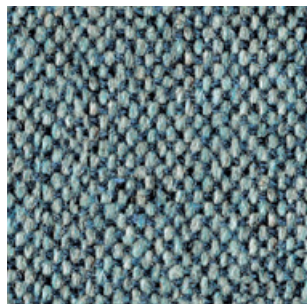
25



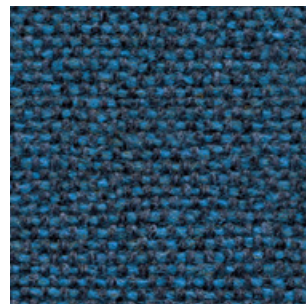
32



2



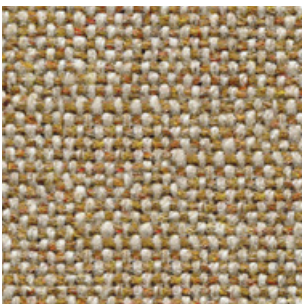
22



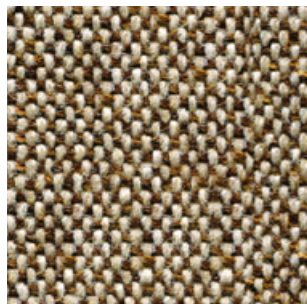
35



36



12



23



16



28

# G4 - CONNECT <sup>NEW</sup>

By Gabriel

## TECHNICAL DATA

### Composition:

48% wool, 41% recycled polyester, 9% polyamide, 2% polyester.

### Light fastness:

5 - 7, ISO 105 B02.

### Abrasion:

90,000 Martindale EN ISO 12947-2.

### Resistance to pilling:

4 - 5, ISO 12945-2.

### Fastness to rubbing:

Wet 4 - 5.

Dry 4 - 5, ISO 105 X12.

### Flammability:

EN 1021 - 1 (cigarette).

EN 1021 - 2 (match).

BS 5852 Crib 5.

CA TB 117-2013.

Class Uno UNI 9175 Class 1 I EMME.

### Environment:

Oeko-Tex® standard 100.

Complies with EU Ecolabel.

Width: 140cm

Weight: 370gr/m<sup>2</sup>



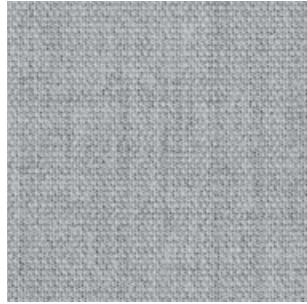
\*\*\*Batch to batch variations may occur within commercial tolerances.



**41%**  
recycled material  
Post Consumer  
Recycled  
Polyester

### Note:

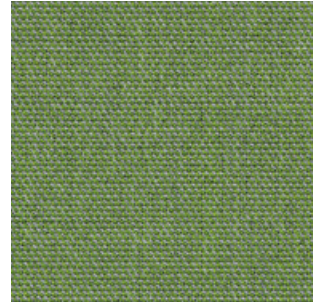
- The real colours and tones of the fabrics may differ from the digital image due to the scan process and the colour calibration of the different screens. Always request real fabric samples before ordering.
- Consult our Fabric and Leather Matrix to know about the availability of this material by product line.



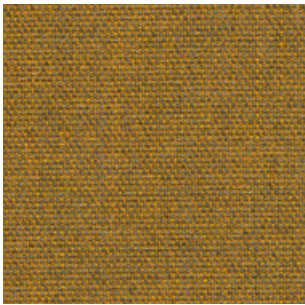
60147



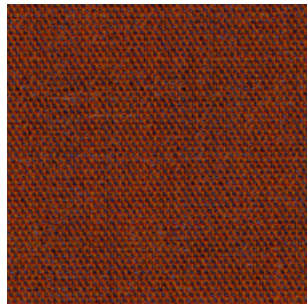
61208



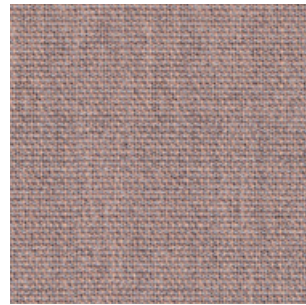
68229



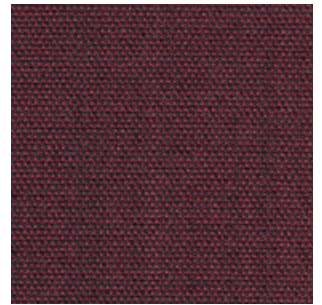
62109



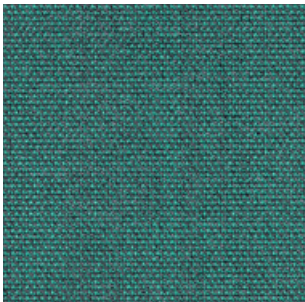
63107



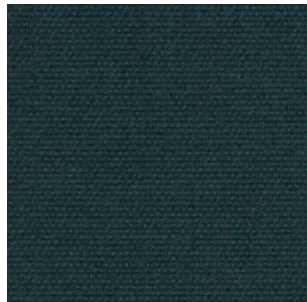
64229



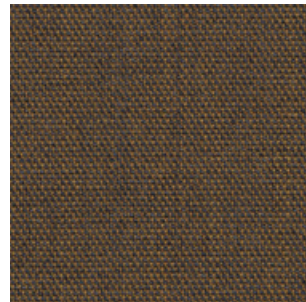
64230



67113



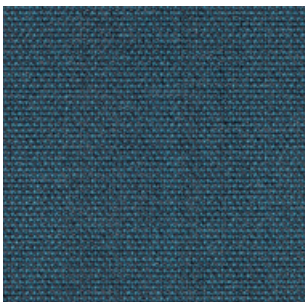
67115



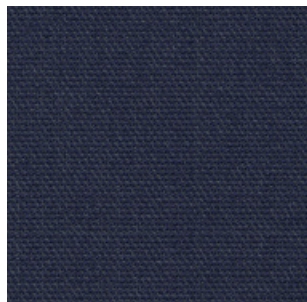
61209



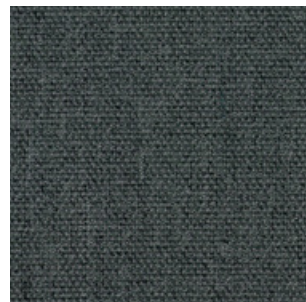
61210



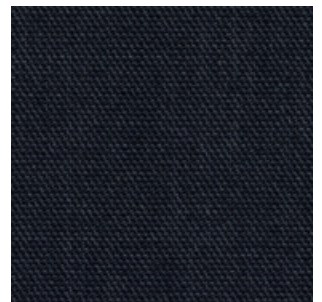
66205



65127



60152



60999

# G4 - VALENCIA

By Spradling

## TECHNICAL DATA

### Composition:

Topcoat: 100% Vinyl.

Backing: 100% Polyester Hi-Loft<sup>2TM</sup>.

### Light fastness:

1000 hours, XENOTEST DIN 54004/NTC 1479.

### Abrasion:

300.000 cycles de Martindale EN ISO 12947:1999 Part 2.

### Cold crack resistance:

-23°C.

### Characteristics:

Antimicrobial protection.

Anibacterial protection.

Antimycotic protection.

### Flammability:

EU: EN 1021 Part 1 y 2.

ES: UNE 23.727-90 1R/M.2.

FR: NF P 92-503/M2.

DE: DIN 4102 B2.

IT: UNI 9175 (1987) / UNI 9175/FA1 (1994) Classe 1.IM (UNO I EMME).

AT: ÖNORM B 3825, Gruppe 1 - Schwerbrennbares Verhalten.

AT: ÖNORM A 3800 Teil 1, Qualmbildungsklasse Q1 - schwachqualmend.

IMO FTP 2010 Code MSC.307 (88) Part 8 3.1 & 3.2.

US: FMVSS 302.

US: FAR 25/853.

(MED) Marine Equipment Directive.

ECE R118.02 (replaces Directive 95/28/CE Annexes 6, 7 & 8.

EN 71-2:2006+A1:2007 - Toy safety - Parte 2: Inflammability.

**Width:** 140cm

**Weight:** 685gr/m<sup>2</sup>



\*\*\*Batch to batch variations may occur within commercial tolerances.



**PERMABLOK®**  
ADVANCED VINYL PROTECTION

### Note:

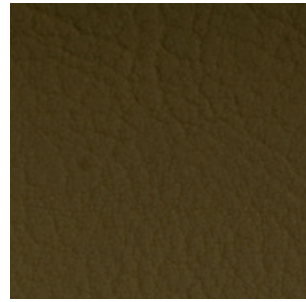
- The real colours and tones of the fabrics may differ from the digital image due to the scan process and the colour calibration of the different screens. Always request real fabric samples before ordering.

- Consult our Fabric and Leather Matrix to know about the availability of this material by product line.





2117



0002



2114



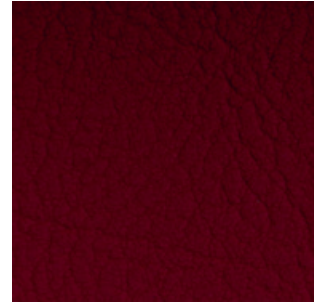
2111



2116



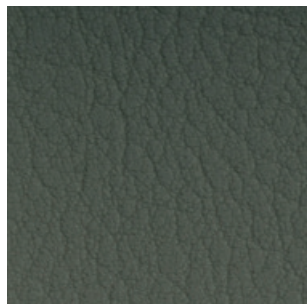
0035



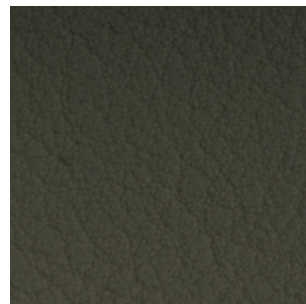
2074



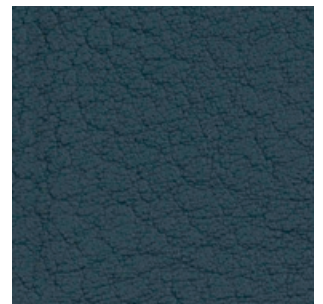
2110



4002



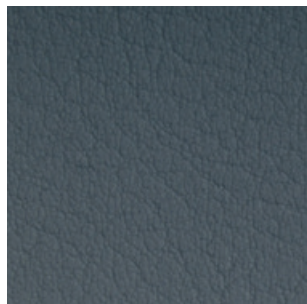
4001



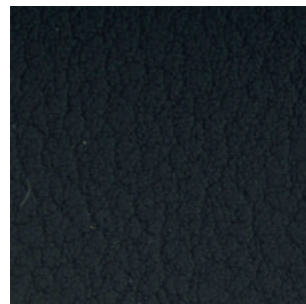
5065



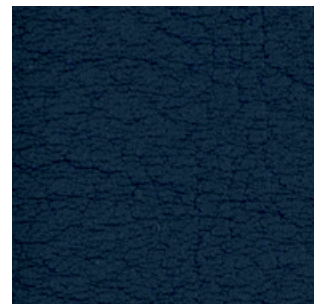
4040



4045



4003



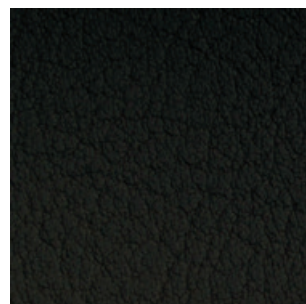
2108



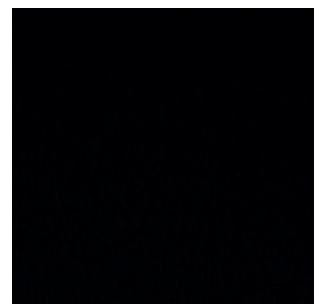
8032



4044



4041



9035

# G4 - STEP

By Gabriel

## TECHNICAL DATA

### Composition:

100% trevira CS.

### Light fastness:

5 - 7, ISO 105 B02.

### Abrasion:

100.000 Martindale EN ISO 12947.

### Resistance to pilling:

4 - 5, ISO 12945-2.

### Fastness to rubbing:

Wet 4 - 5. - Dry 4 - 5, ISO 105 X12.

### Flammability:

IMO MSC 307(88) Annex 1 part 8.

MED.

Certificate IMO.

DIN 4102 B1.

NFP 92-503/504/505 M1.

BS EN 1021 1&2 Cigarette and Match.

BS EN 1021-1 Cigarette.

BS 5852 Part 1 0,1 Cigarette and Match.

BS 5852 Crib 5.

ÖNORM B 3825-B1-3800-Q1 UK.

FAR/JAR 25.853 (a) (i) (ii).

BS 7176 Medium hazard.

AM 18 - NF D 60-013-(only for fabric).

CA TB 117-2013.

Class Uno UNI 9175 Class 1 I EMME.

DIN EN 13501-1 B-s1,d0.

### Environment:

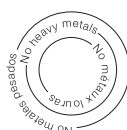
Oeko-Tex - EU Ecolabel - 100% free of heavy metals.

Width: 140cm

Weight: 470gr/m<sup>2</sup>

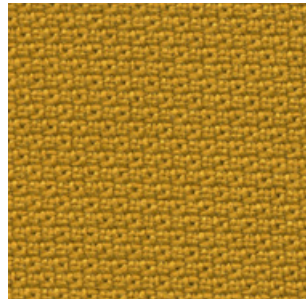


\*\*\*Batch to batch variations may occur within commercial tolerances.

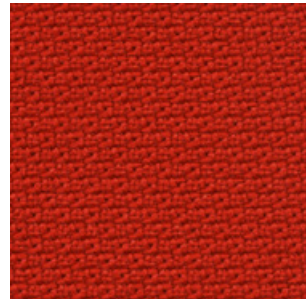


### Note:

- The real colours and tones of the fabrics may differ from the digital image due to the scan process and the colour calibration of the different screens. Always request real fabric samples before ordering.
- Consult our Fabric and Leather Matrix to know about the availability of this material by product line.



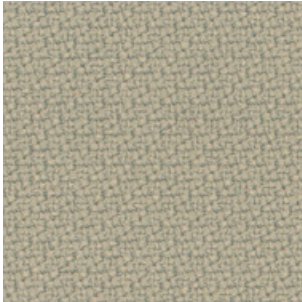
2440 - 62057



2440 - 63012



2442 - 64159



2440 - 61149



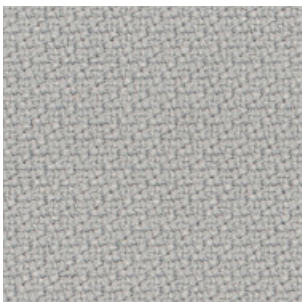
2442 - 61103



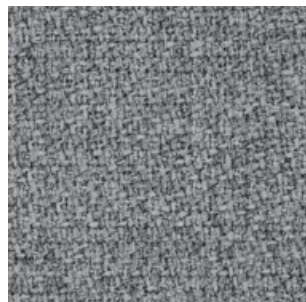
2440 - 61150



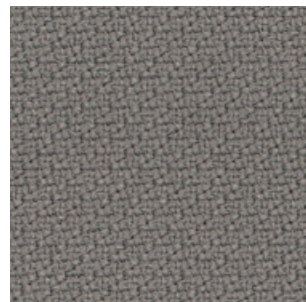
2442 - 65047



2440 - 60004



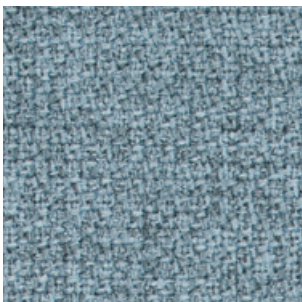
2441 - 60004



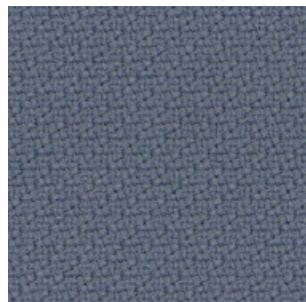
2440 - 60011



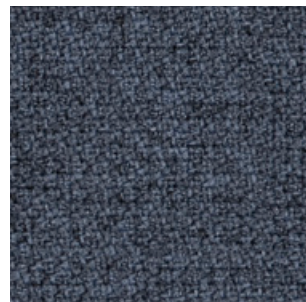
2442 - 60011



2441 - 67004



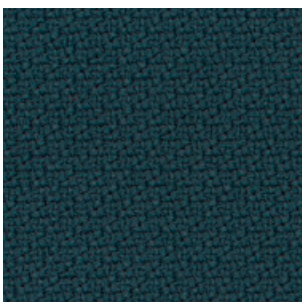
2440 - 66152



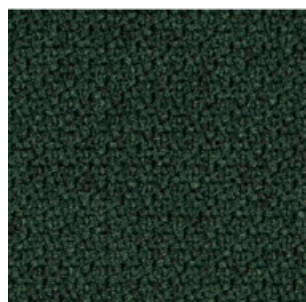
2442 - 66152



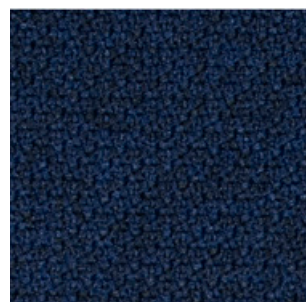
2442 - 66019



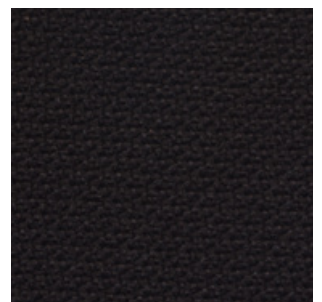
2440 - 68158



2442 - 68121



2442 - 65011



2440 - 60999

# G5 - DOLCE<sup>NEW</sup>

By Spradling

## TECHNICAL DATA

### Composition:

Topcoat: 100% polyurethane.

Backing: 100% rayon.

### Light fastness:

40 hours, XENOTEST DIN 54004/NTC 1479.

### Abrasion:

≥300.000 Martindale EN ISO 12947:1999 Part 2.

### Cold crack resistance:

-23°C.

### Characteristics:

Antibacterial protection.

### Flammability:

EU: EN 1021 Part 1 y 2

US: FMVSS 302

UK: BS 5852 Part 2 CRIB 5

IMO FTP 2010 Code MSC.307 (88) Part 8 3.1 & 3.2.

**Width:** 140cm

**Weight:** 685gr/m<sup>2</sup>



\*\*\*Batch to batch variations may occur within commercial tolerances.

### Note:

- The real colours and tones of the fabrics may differ from the digital image due to the scan process and the colour calibration of the different screens. Always request real fabric samples before ordering.

- Consult our Fabric and Leather Matrix to know about the availability of this material by product line.



6703



6706



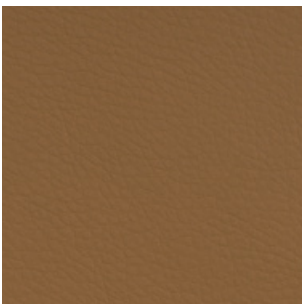
6708



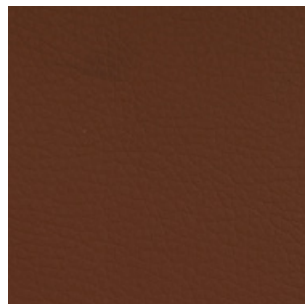
6719



6714



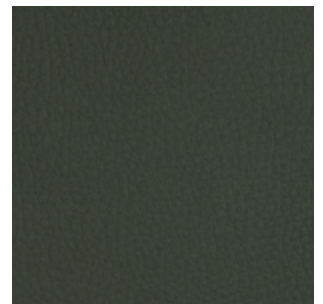
6709



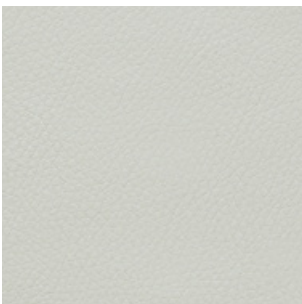
6711



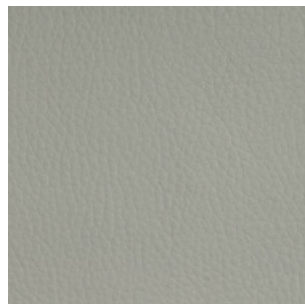
6712



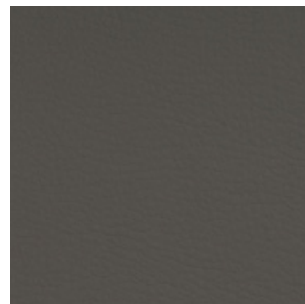
6717



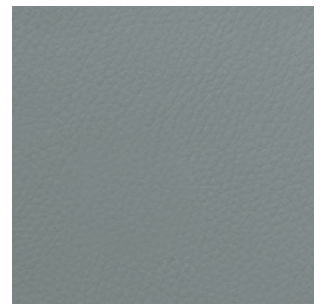
6729



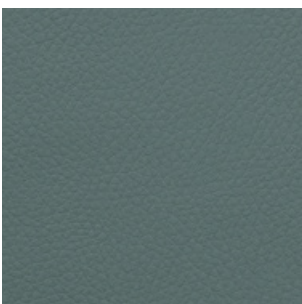
6726



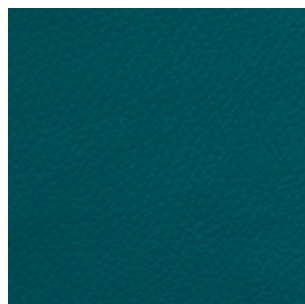
6727



6736



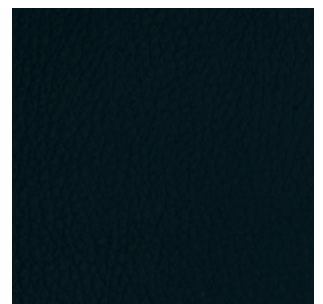
6735



6734



6724



6728

# G5 - SYNERGY<sup>NEW</sup>

By Camira

## TECHNICAL DATA

### Composition:

95% virgin wool, 5% polyamide.

### Light fastness:

5, ISO 105-B02.

### Abrasion:

≥100.000 Martindale EN ISO 12947.

### Fastness to rubbing:

Wet 4.

Dry 4, ISO 105 X12.

### Flammability:

EN 1021 - 1 (cigarette).

EN 1021 - 2 (match).

BS 7176 Low Hazard.

NF D 60-013.

ÖNORM B 3825 & A 3800-1 (sobre 58kg/m<sup>3</sup> Foam CMHR).

UNI 9175 Classe 1 IM.

EN 13501-1 Adhered Class D, s1, d0.

EN 13501-1 Un-adhered Class E, s2, d0.

IMO FTP Code (Part 8).

### Environment:

Complies with EU Ecolabel.

Certificate Indoor Advantage™ Gold.

**Width:** 140cm

**Weight:** 400gr/m<sup>2</sup>



\*\*\*Batch to batch variations may occur within commercial tolerances.



### Note:

- The real colours and tones of the fabrics may differ from the digital image due to the scan process and the colour calibration of the different screens. Always request real fabric samples before ordering.
- Consult our Fabric and Leather Matrix to know about the availability of this material by product line.



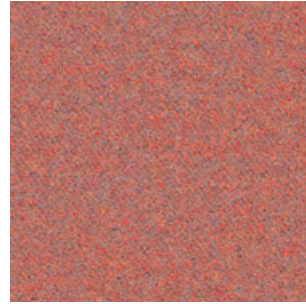
74



45



43



73



84



32



22



37



34



49



59



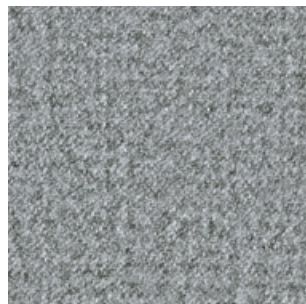
62



41



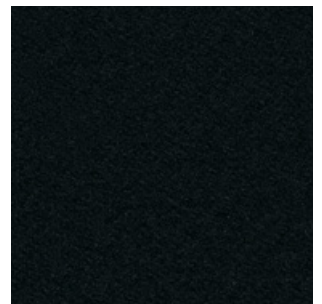
8



16



17



27

# G5 - REMIX

By Kvadrat

## TECHNICAL DATA

**Designer:**

Giulio Ridolfo.

**Composition:**

90% new wool, 10% nylon.

**Light fastness:**

5 - 7, ISO 105-B02.

**Abrasion:**

100.000 Martindale EN ISO 12947.

**Resistance to pilling:**

4, EN ISO 12945.

**Flammability:**

AS/NZS 1530.3.

BS 5852 part 1.

EN 1021-1/2.

IMO FTP Code 2010: Part 8.

NF D 60 013.

NFPA 260.

Önorm B1/Q1.

UNI 9175 1IM.

US Cal. Bull. 117-2013.

**Environment:**

Complies with EU ecolabel "The Flower".

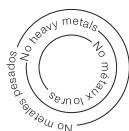
100% free of heavy metals.

**Width:** 140cm

**Weight:** 415gr/m<sup>2</sup>



\*\*\*Batch to batch variations may occur within commercial tolerances.

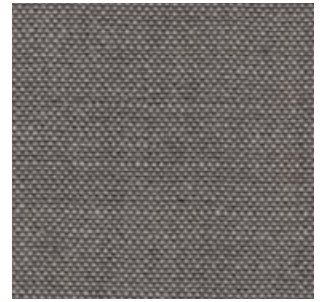


**Note:**

- The real colours and tones of the fabrics may differ from the digital image due to the scan process and the colour calibration of the different screens. Always request real fabric samples before ordering.

- Consult our Fabric and Leather Matrix to know about the availability of this material by product line.





136



433



452



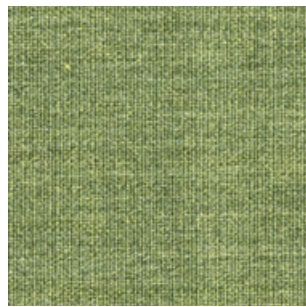
346



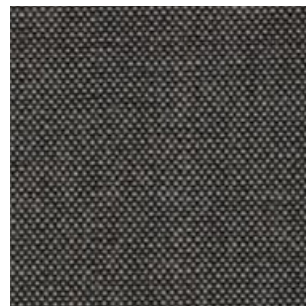
653



326



933



152



356



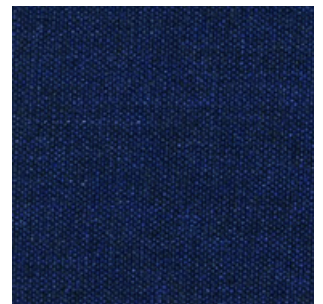
733



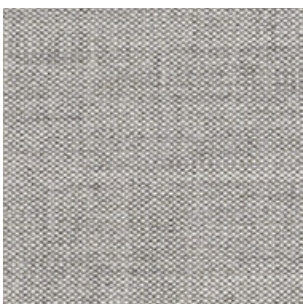
743



266



773



123



143



163



183

# G5 - CANVAS

By Kvadrat

## TECHNICAL DATA

**Designer:**

Giulio Ridolfo.

**Composition:**

90% new wool, 10% nylon.

**Light fastness:**

5 - 7, ISO 105-B02.

**Abrasion:**

100.000 Martindale EN ISO 12947.

**Resistance to pilling:**

4 - 5, EN ISO 12945.

**Flammability:**

AS/NZS 1530.3.

BS 5852 Crib 5 when flameprotected.

BS 5852, ignition source 3.

BS 5852 part 1.

DIN 4102 B2.

IMO FTP Code 2010: Part 8.

NF D 60 013.

NFPA 260.

Önorm B1/Q1.

UNI 9175 1IM.

US Cal. Bull. 117-2013.

**Environment:**

Complies with EU ecolabel "The Flower".

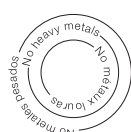
100% free of heavy metals.

**Width:** 140cm

**Weight:** 480gr/m<sup>2</sup>.

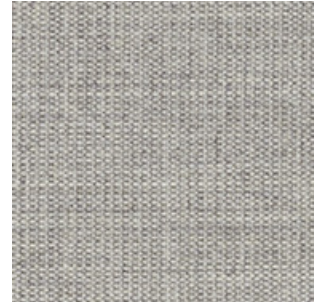


\*\*\*Batch to batch variations may occur within commercial tolerances.



**Note:**

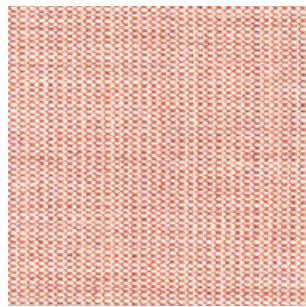
- The real colours and tones of the fabrics may differ from the digital image due to the scan process and the colour calibration of the different screens. Always request real fabric samples before ordering.
- Consult our Fabric and Leather Matrix to know about the availability of this material by product line.



124



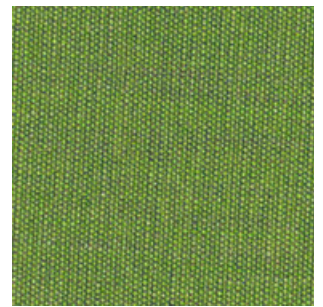
244



614



654



954



964



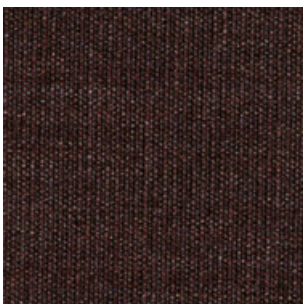
454



424



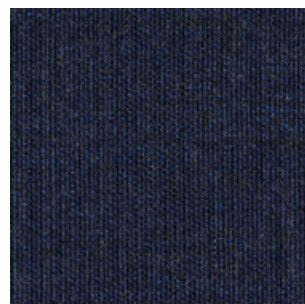
264



364



684



794



174

# G6 - STEELCUT TRIO

By Kvadrat

## TECHNICAL DATA

**Designer:**

Frans Dijkmeijer and Giulio Ridolfo.

**Composition:**

90% new wool, 10% nylon.

**Light fastness:**

5 - 7 ISO 105-B02.

**Abrasion:**

100.000 Martindale EN ISO 12947.

**Resistance to pilling:**

4, EN ISO 12945.

**Flammability:**

AS/NZS 1530.3

AS/NZS 3837 class 2.

BS 5852 part 1.

DIN 4102 B2.

EN 1021-1/2.

IMO FTP Code 2010: Part 8.

NF D 60 013.

NFPA 260.

Önorm B1/Q1.

UNI 9175 1IM.

US Cal. Bull. 117-2013.

**Environment:**

Complies with EU ecolabel "The Flower".

100% free of heavy metals.

**Width:** 140cm

**Weight:** 770gr/m<sup>2</sup>

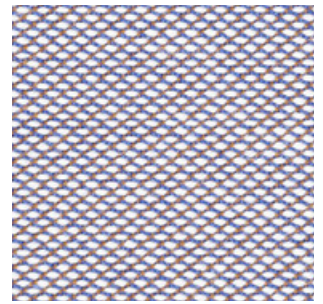


\*\*\*Batch to batch variations may occur within commercial tolerances.

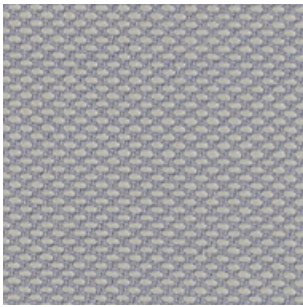


**Note:**

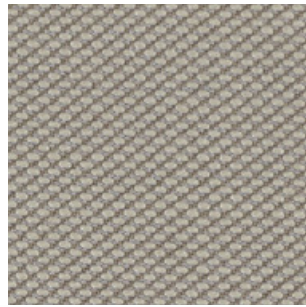
- The real colours and tones of the fabrics may differ from the digital image due to the scan process and the colour calibration of the different screens. Always request real fabric samples before ordering.
- Consult our Fabric and Leather Matrix to know about the availability of this material by product line.



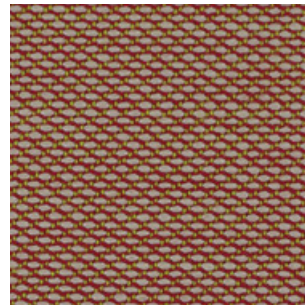
806



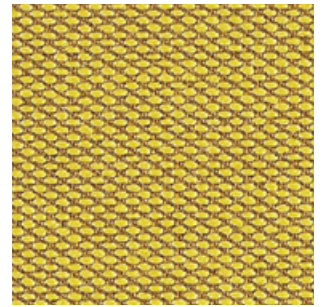
105



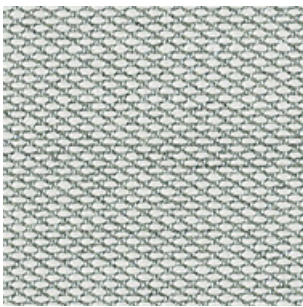
205



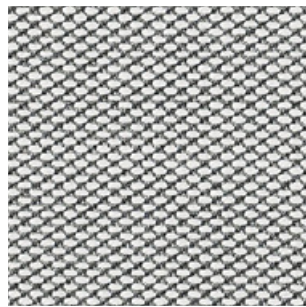
515



453



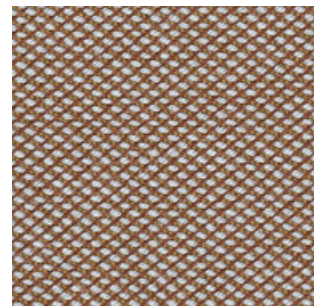
113



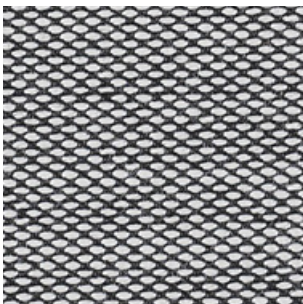
133



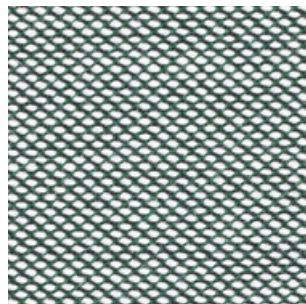
236



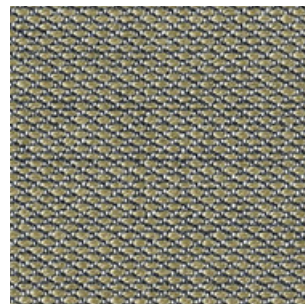
476



124



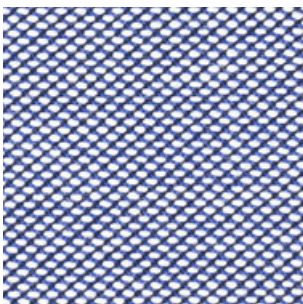
916



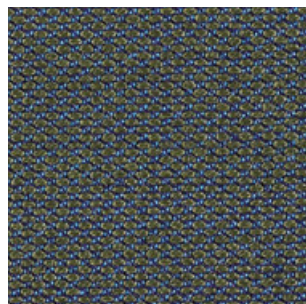
253



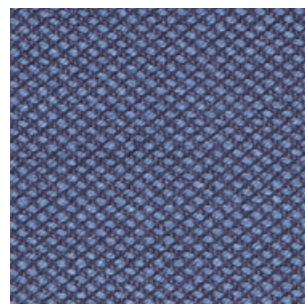
645



716



883



796



383

# G6 - FIORD

By Kvadrat

## TECHNICAL DATA

**Designer:**

Louise Sigvardt & Tone Barnung.

**Composition:**

92% new wool, 8% nylon.

**Light fastness:**

5 - 7, ISO 105-B02.

**Abrasion:**

60.000 Martindale EN ISO 12947.

**Resistance to pilling:**

4 - 5, EN ISO 12945.

**Flammability:**

AS/NZS 3837 class 2.

ASTM E84 Class A Adhered.

ASTM E84 Class A Unadhered.

BS 5852 part 1.

EN 1021-1/2.

IMO FTP Code 2010:Part 8.

NF D 60 013.

NFPA 260.

ÖNORM B1/Q1.

UNI 9175 1IM.

US Cal. Bull. 117-2013.

**Environment:**

Complies with EU ecolabel "The Flower"

100% free of heavy metals.

**Width:** 140cm

**Weight:** 500gr/m<sup>2</sup>



\*\*\*Batch to batch variations may occur within commercial tolerances.

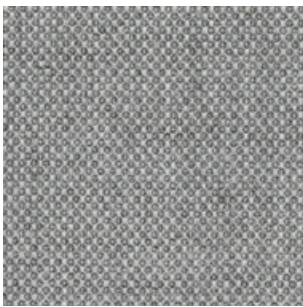


**Note:**

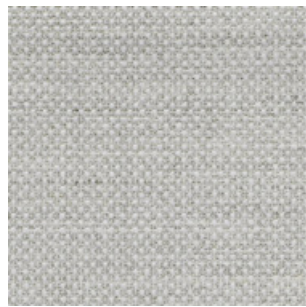
- The real colours and tones of the fabrics may differ from the digital image due to the scan process and the colour calibration of the different screens. Always request real fabric samples before ordering.
- Consult our Fabric and Leather Matrix to know about the availability of this material by product line.



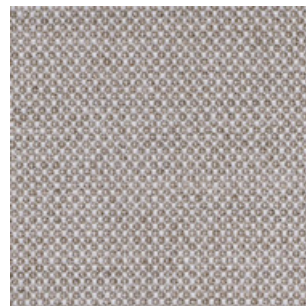
271



151



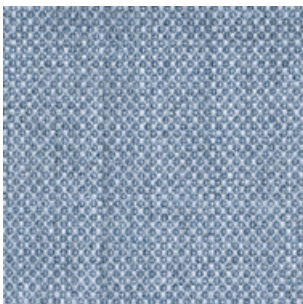
121



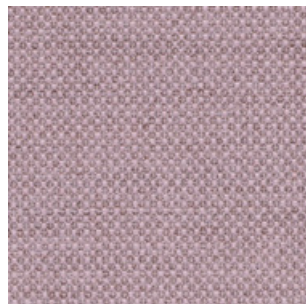
251



451



751



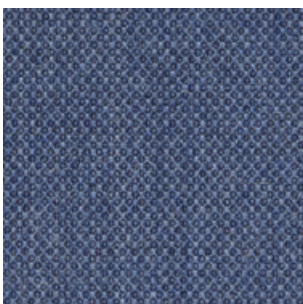
551



951



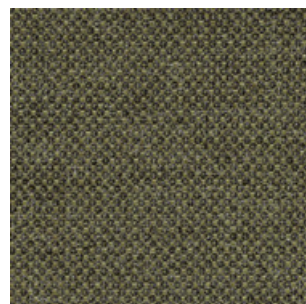
371



771



591



961



191

# G7 - HALLINGDAL

By Kvadrat

## TECHNICAL DATA

**Designer:**

Nanna Ditzel.

**Composition:**

70% new wool, 30% viscose.

**Light fastness:**

5 - 7 ISO 105-B02.

**Abrasion:**

100.000 Martindale EN ISO 12947.

**Resistance to pilling:**

3, EN ISO 12945.

**Flammability:**

AS/NZS 1530.3.

AS/NZS 3837.

BS 5852 Crib 5.

BS5852 part 1.

DIN 4102 B2.

EN 1021-1/2.

IMO FTP Code 2010: Part 8.

NF D 60 013.

NFPA 260.

Önorm B1/Q1.

UNI 9175 1IM.

US Cal. Bull. 117 - 2013.

**Environment:**

Complies with EU ecolabel "The Flower".

**Width:** 140cm

**Weight:** 795gr/m<sup>2</sup>



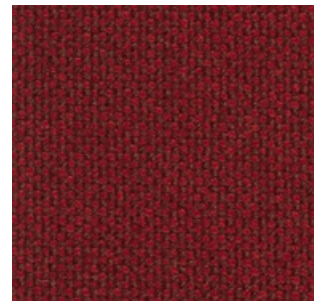
\*\*\*Batch to batch variations may occur within commercial tolerances.



**Note:**

- The real colours and tones of the fabrics may differ from the digital image due to the scan process and the colour calibration of the different screens. Always request real fabric samples before ordering.
- Consult our Fabric and Leather Matrix to know about the availability of this material by product line.

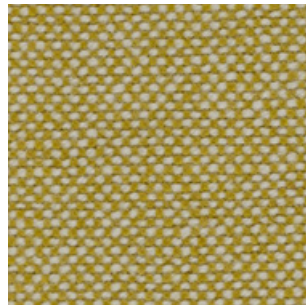




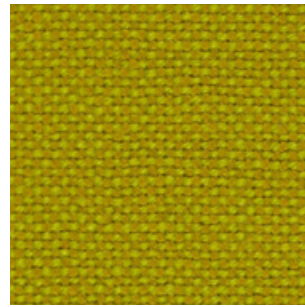
687



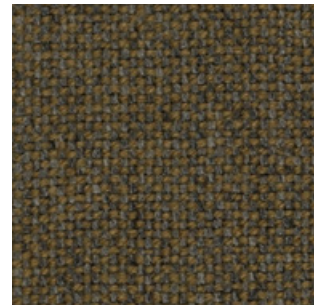
200



407



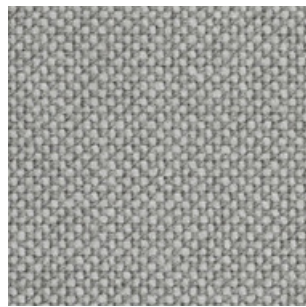
420



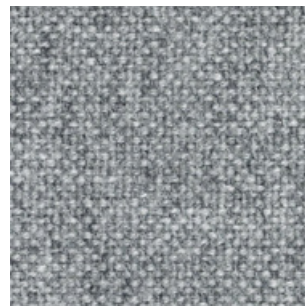
227



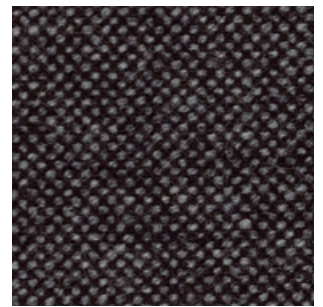
100



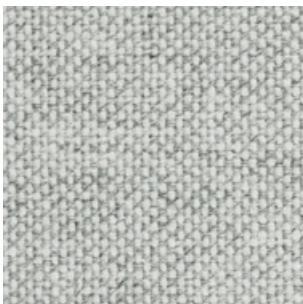
123



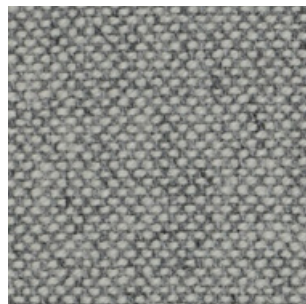
130



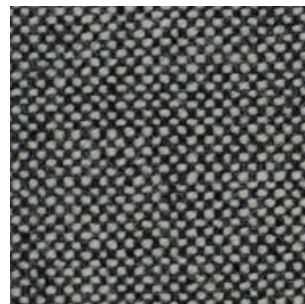
368



110



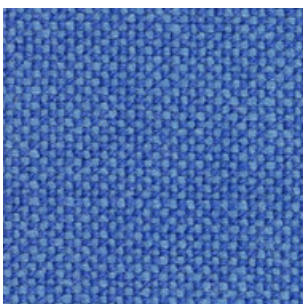
116



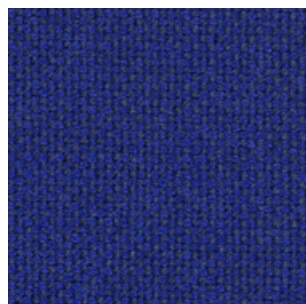
126



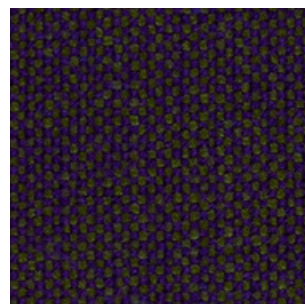
180



733



773



968



376

# G10 - LEATHER

## TECHNICAL DATA

**Composition:**

Cow leather.

**Light fastness:**

≥4/5, UNI EN ISO 105B02.

**Fastness to rubbing:**

Wet ≥4 (150 cycles).

Dry ≥4 (500 cycles).

Perspiration ≥4 (80 cycles), UNI EN ISO 11640: 1998 - 11641 (pH8).

**Tear strength:**

>20N, EN ISO 3377-1.

**Determination of PH:**

>3,5, EN ISO 4045.

**Adhesion of the finish:**

≥2, UNI EN ISO 11644.

**Determination of dry ex resistance:**

Without damage, UNI EN ISO 5402.

**Flammability:**

Ignition source 0 (cigarette).

Ignition source 1 (match).

BS 5852-1979.

BS EN 1021-1-2:2006.

**Thickness:**

0,9 - 1,1mm

**Average surface:**

4,8 - 5,0m<sup>2</sup>

**Maintenance:**

Wash with neutral soap and water or with a cleaning product for leather.

\*\*\*Batch to batch variations may occur within commercial tolerances.

**Note:**

- The real colours and tones of the fabrics may differ from the digital image due to the scan process and the colour calibration of the different screens. Always request a real leather sample before ordering.

- Consult our Fabric and Leather Matrix to know about the availability of this material by product line.



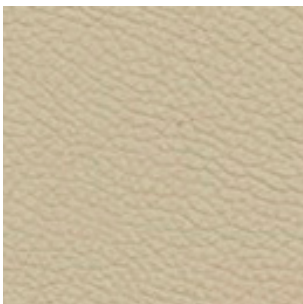
207



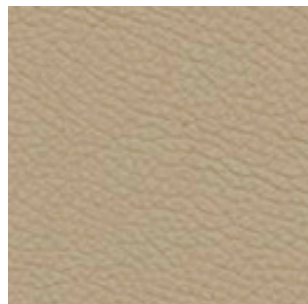
214



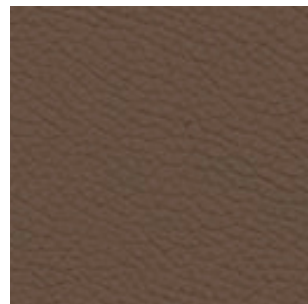
218



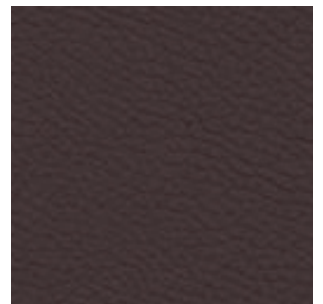
224



201



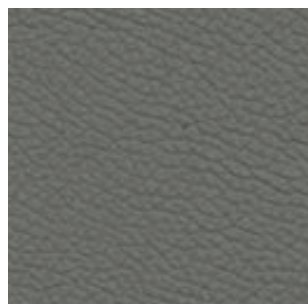
216



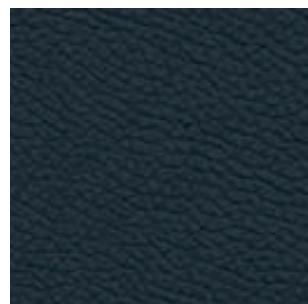
203



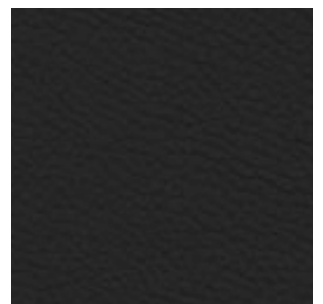
219



208



209



204

# G11 - LEATHER

## TECHNICAL DATA

**Composition:**

Cow leather.

**Light fastness:**

≥5, UNI EN ISO 105B02.

**Fastness to rubbing:**

Wet ≥4 (80 cycles).

Dry ≥4 (500 cycles).

Perspiration ≥4 (50 cycles), UNI EN ISO 11640 - 11641.

**Tear strength:**

≥20N, EN ISO 3377-1.

**Determination of PH:**

≥3,5 ≤0,7 EN ISO 4045.

**Adhesion of the finish:**

≥2,5N / 10mm, UNI EN ISO 11644.

**Determination of dry flex resistance:**

>50.000 cycles, UNI EN ISO 5402-1.

**Flammability:**

Ignition source 0 (cigarette)

Ignition source 1 (match), BS 5852-1:79.

**Thickness:**

0,9 - 1,1mm

**Average surface:**

4,8 - 5,0m<sup>2</sup>

**Maintenance:**

Wash with neutral soap and water or with a cleaning product for leather.

\*\*\*Batch to batch variations may occur within commercial tolerances.

Note:

- The real colours and tones of the fabrics may differ from the digital image due to the scan process and the colour calibration of the different screens. Always request a real leather sample before ordering.

- Consult our Fabric and Leather Matrix to know about the availability of this material by product line.



333



348



346



320



331



332



344



324



362



375



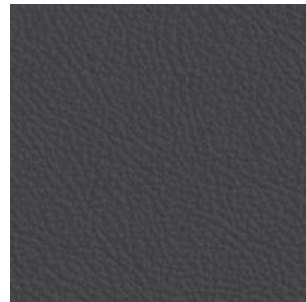
326



317



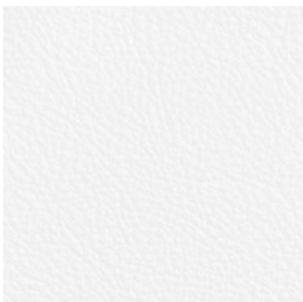
321



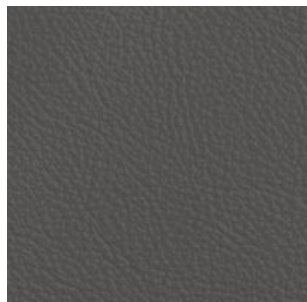
325



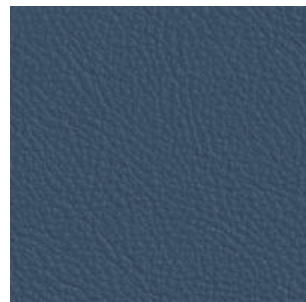
328



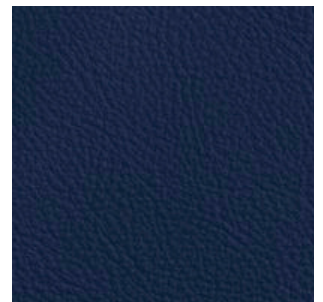
311



322



357



358